



1 complete **PTFE tube manufacturing** consisting of **2 JENNINGS** extrusion lines with **accessories**



Art.-No. **10585**

1 used **JENNINGS** extrusion line

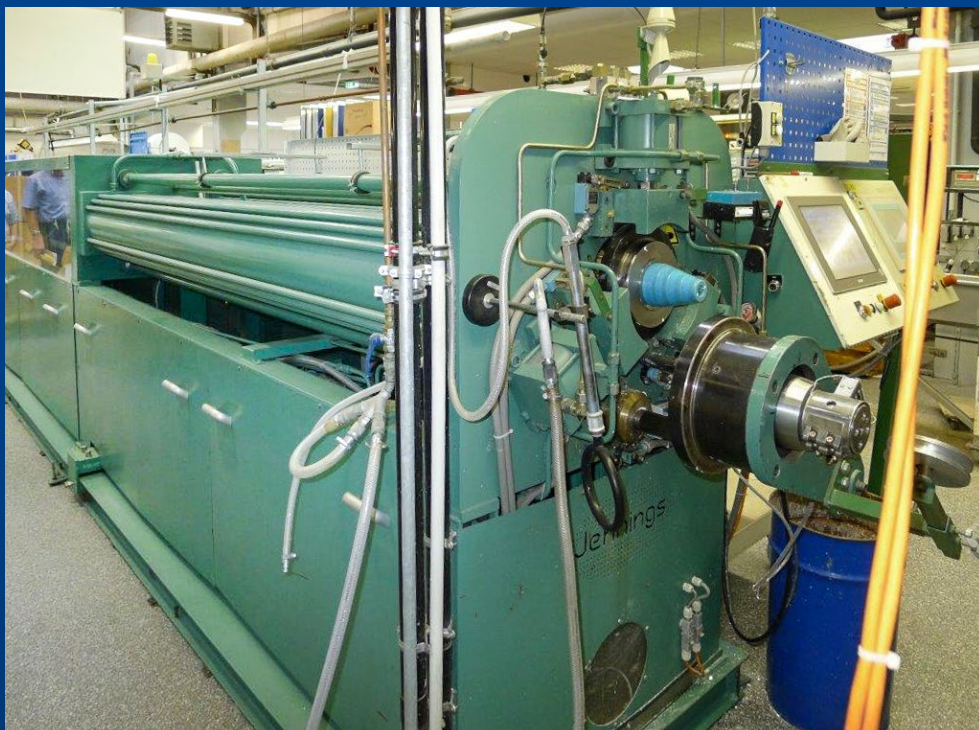
Year of manufacture: **2002**
condition: **very good**,
in production.

Technical details:

Up to now used for
tube-Ø max. 8,0mm outside,
tube-Ø min. 1,0mm inside,
tube-Ø max. 6,0/7,0mm
inside, zylinder-Ø 3,0 and 4",
Line speed max. 50m/min
(depend on Material),
Maximum length of final
product approx. 800-900m

accessories:

- ZUMBACH measuring devices
- take-up
- extruder JENNINGS 75 T
- cooling units
- dancer
- sinter-oven
- drying oven
- caterpillar



Contact

info@bongard.de or +49 2378 9155

bongard
machines trading

Complete program under
www.bongard.de

Specialist for
Retrofit & CE-Upgrade Service



1 complete **PTFE tube manufacturing** consisting of **2 JENNINGS** extrusion lines with **accessories**



1 used **JENNINGS** extrusion line

Year of manufacture: **1999**

Technical details:

Up to now used for tube-Ø max. 6,0mm outside, tube-Ø min. 1,0mm inside, zylinder-Ø 2,5 and 3", Material PTFE, Line speed max. 50m/min (depend on Material), Maximum length of final product approx. 2.000m

accessories:

- ZUMBACH measuring devices
- take-up
- extruder JENNINGS 50 T
- cooling units
- dancer
- sinter-oven
- drying oven
- caterpillar



consisting of:

- double Cartridge Press, 50 t
- Rhönrad mixer
- double Cartridge Press, 75 t, year of manufacture: 2012
- cut to length line
- screening unit
- 2 tumble mixer
- hydrostatic testing line

Contact

info@bongard.de or +49 2378 9155

bongard
machines trading

Complete program under
www.bongard.de

Specialist for
Retrofit & CE-Upgrade Service